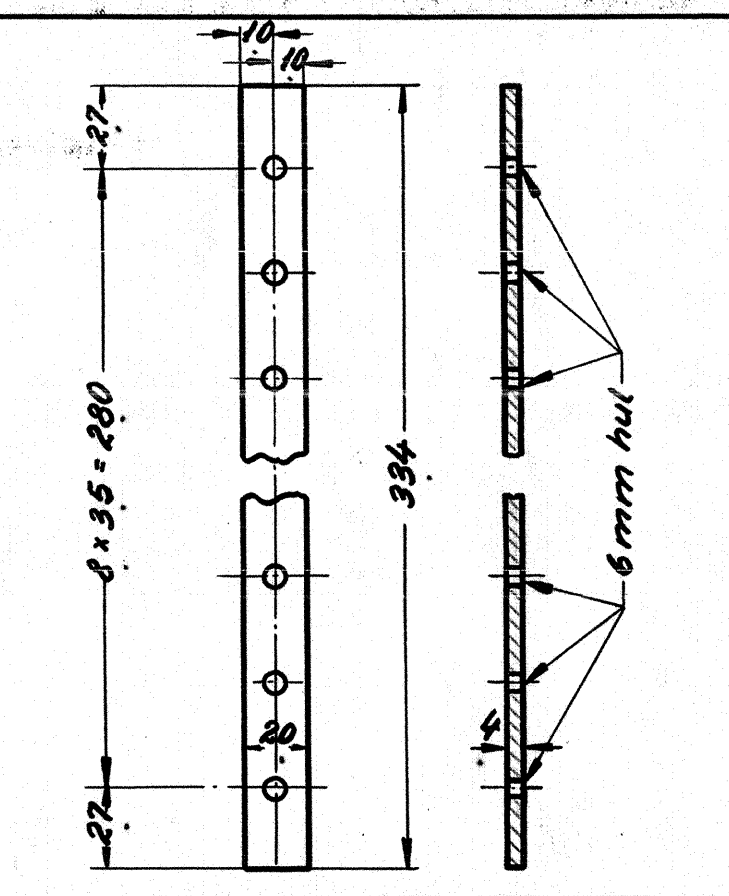
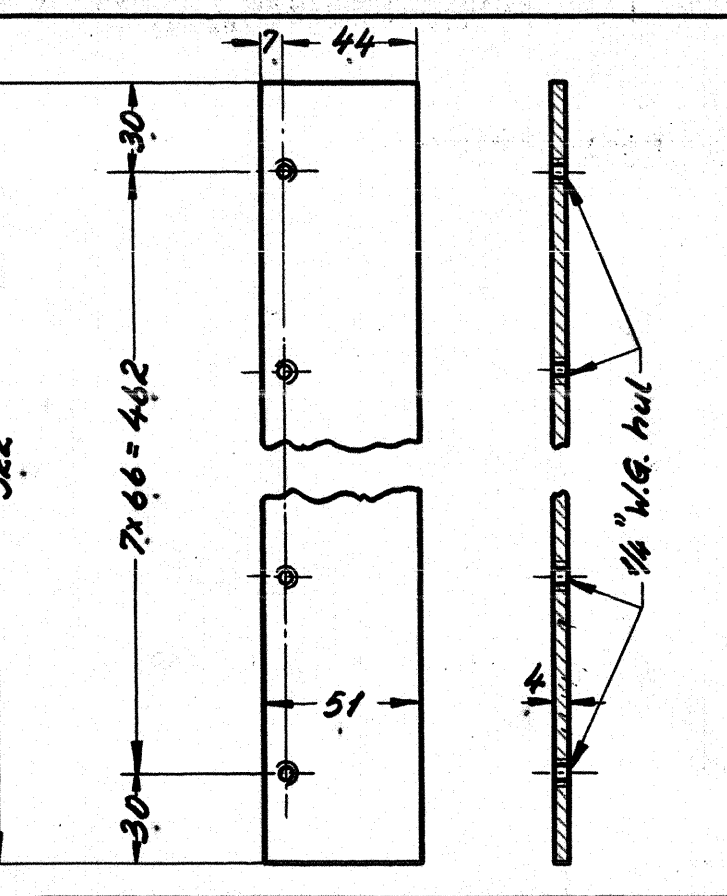


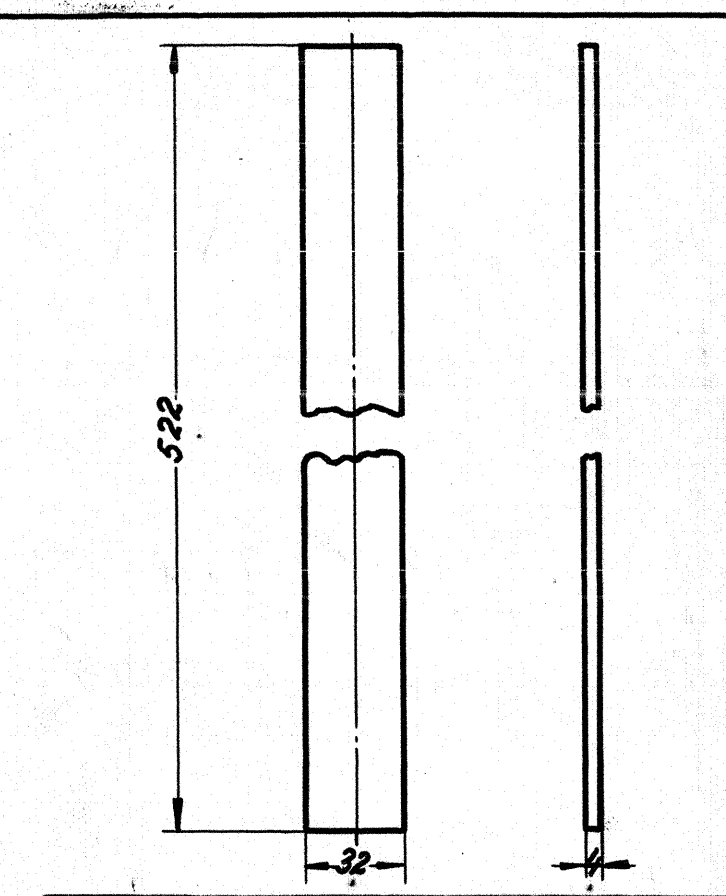
Betegnelse	rammestykke		
Ant. i alt.	Pos. 5	Mat.	st. 37
Ordn.	Sktl. 6988	Tegn.	18W-21.631 a



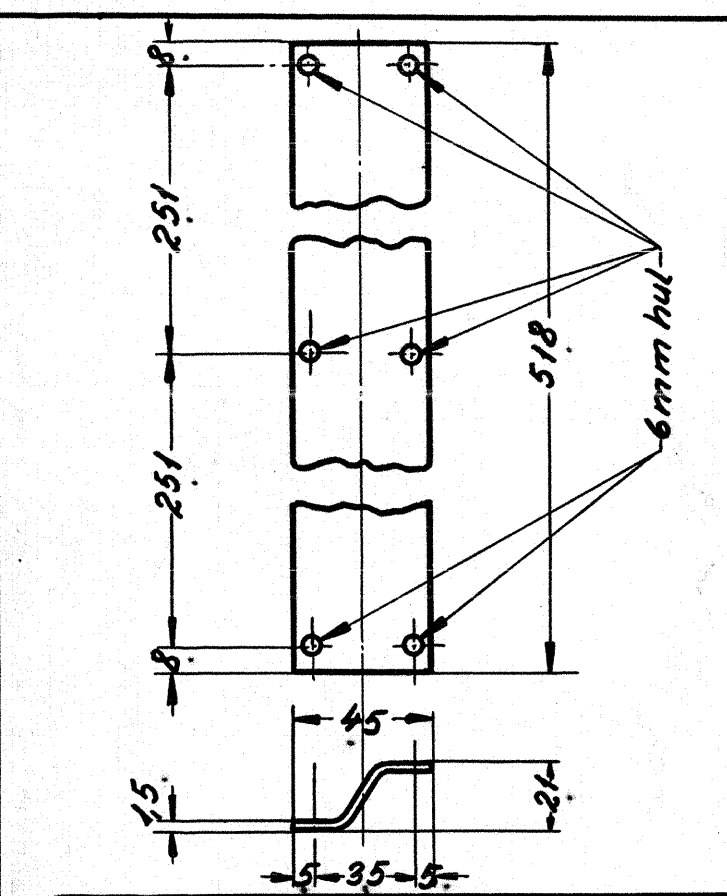
Betegnelse	rammestykke		
Ant. i alt.	Pos. 7	Mat.	st. 37
Ordn.	Sktl. 6988	Tegn.	18W-21.631 a



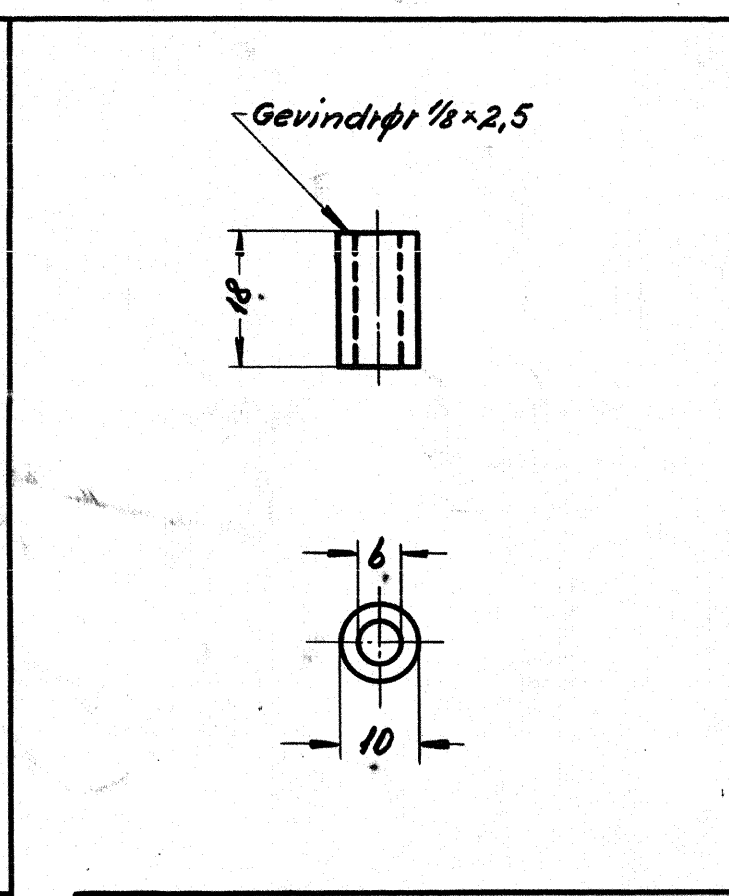
Betegnelse	rammestykke		
Ant. i alt.	Pos. 9	Mat.	st. 37
Ordn.	Sktl. 6988	Tegn.	18W-21.631 a



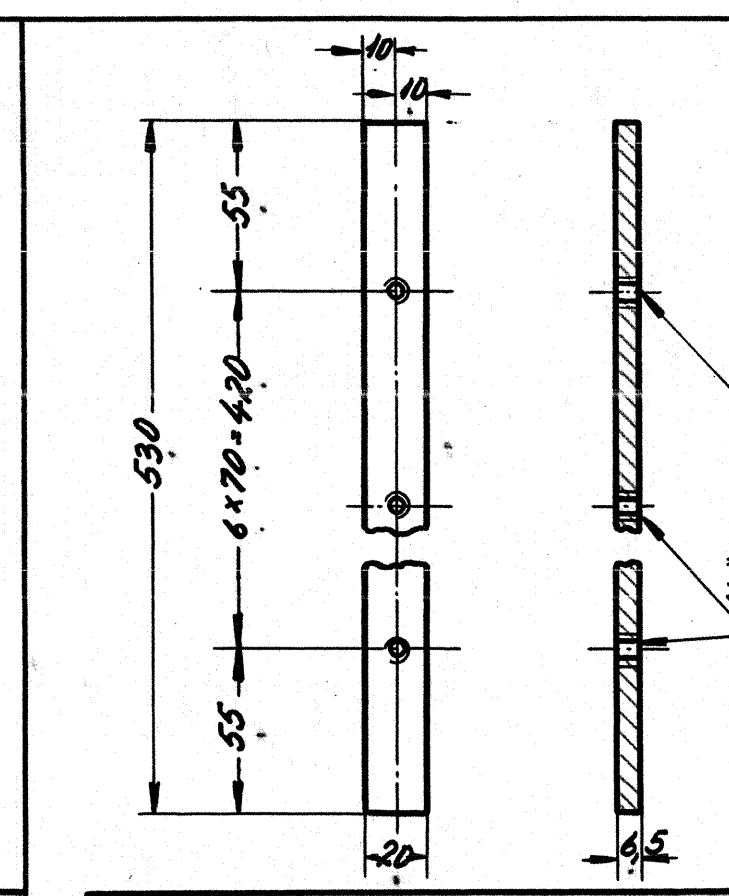
Betegnelse	rammestykke		
Ant. i alt.	Pos. 11	Mat.	st. 37
Ordn.	Sktl. 6988	Tegn.	18W-21.631 a



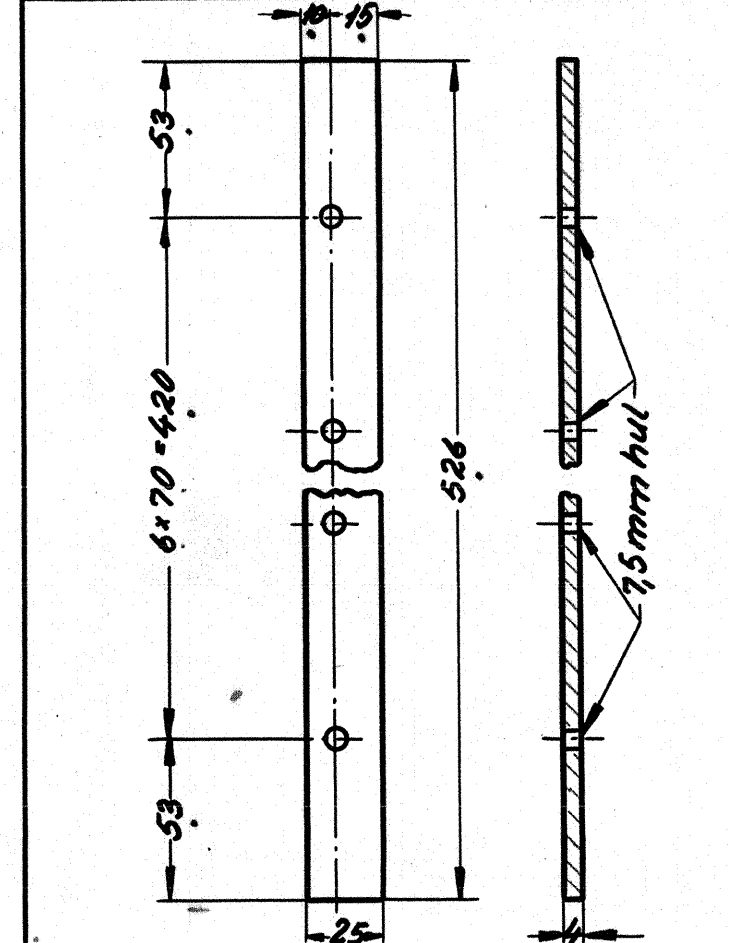
Betegnelse	tremme		
Ant. i alt.	Pos. 13	Mat.	aluminium
Ordn.	Sktl. 6988	Tegn.	18W-21.631 a



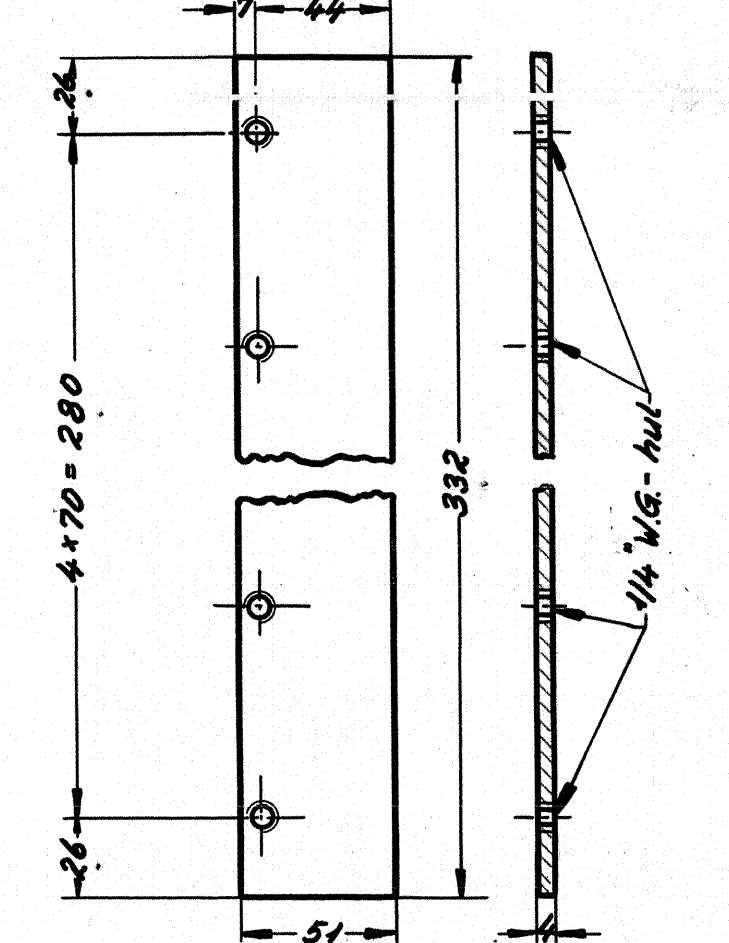
Betegnelse	afstandsstør		
Ant. i alt.	Pos. 15	Mat.	st. 00.29
Ordn.	Sktl. 6988	Tegn.	18W-21.631 a



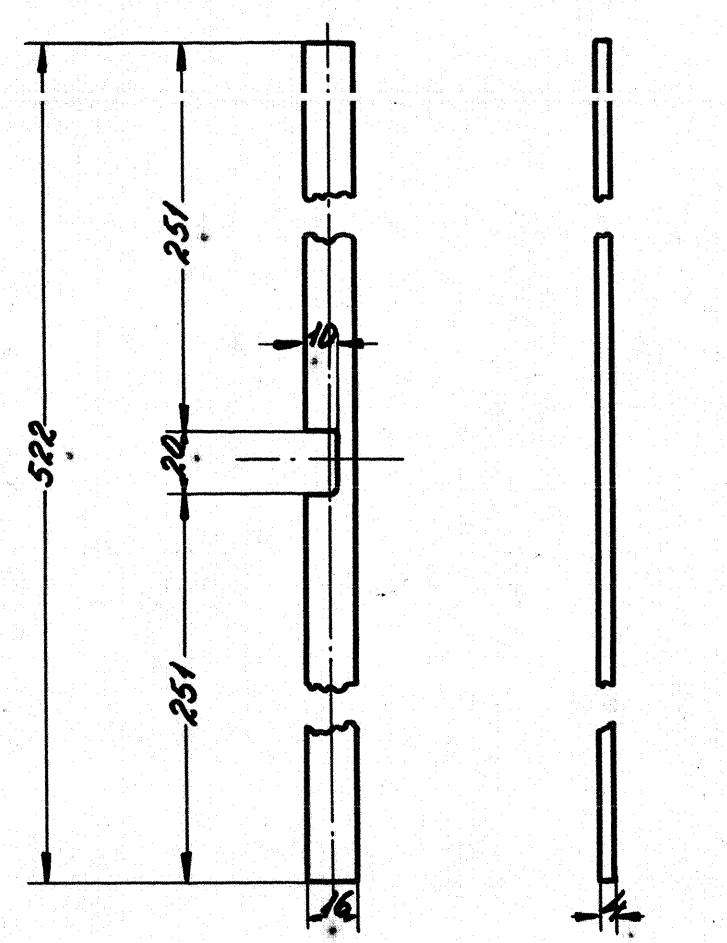
Betegnelse	befæstigelseslap		
Ant. i alt.	Pos. 19	Mat.	st. 37
Ordn.	Sktl. 6988	Tegn.	18W-21.631 a



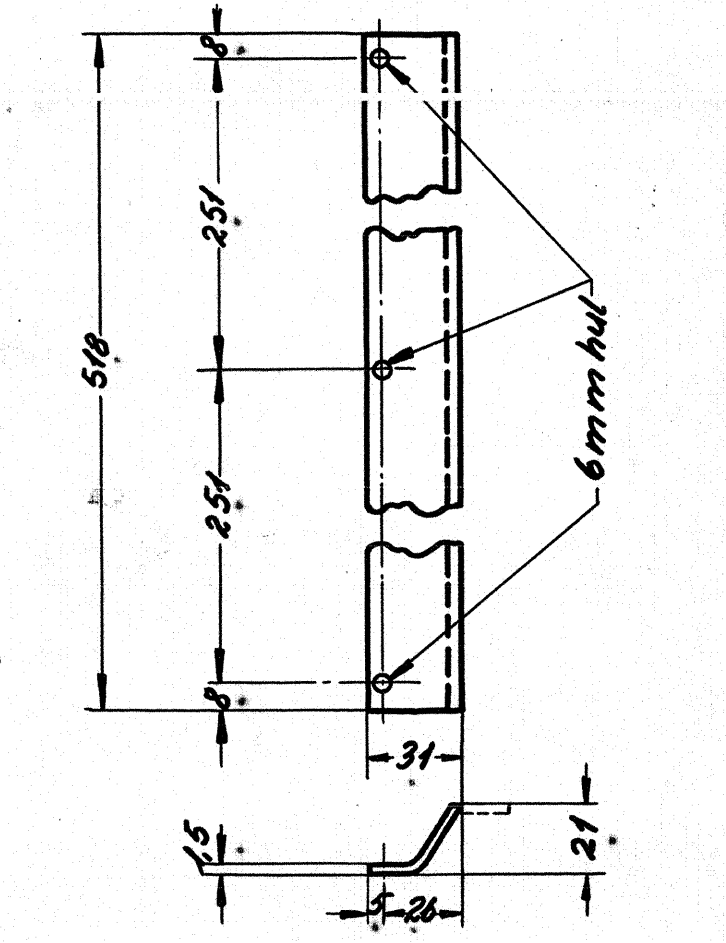
Betegnelse	rammestykke		
Ant. i alt.	Pos. 6	Mat.	st. 37
Ordn.	Sktl. 6988	Tegn.	18W-21.631 a



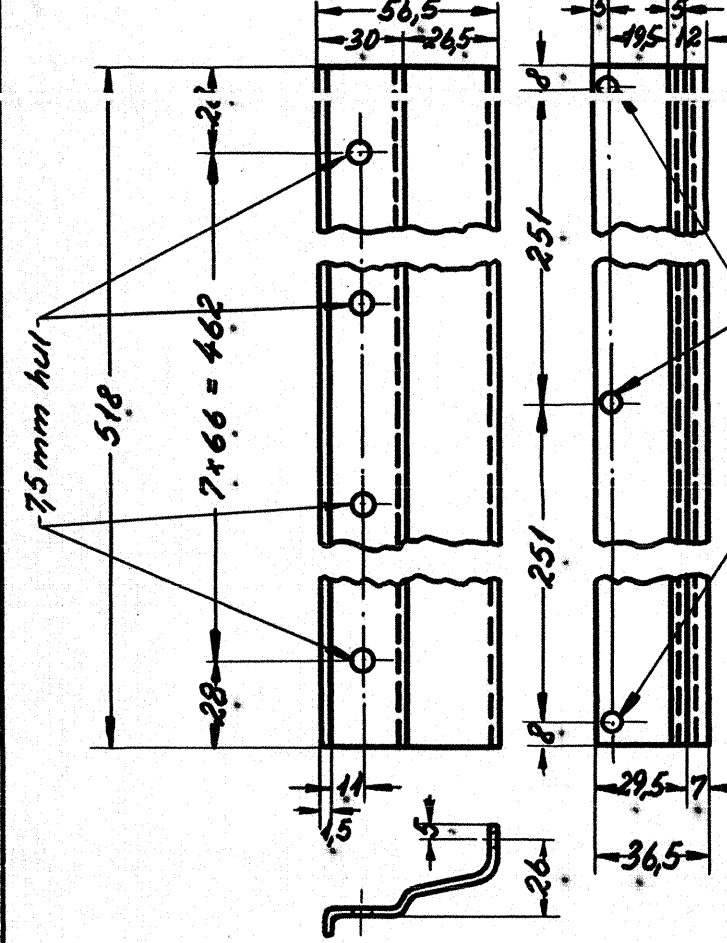
Betegnelse	rammestykke		
Ant. i alt.	Pos. 8	Mat.	st. 37
Ordn.	Sktl. 6988	Tegn.	18W-21.631 a



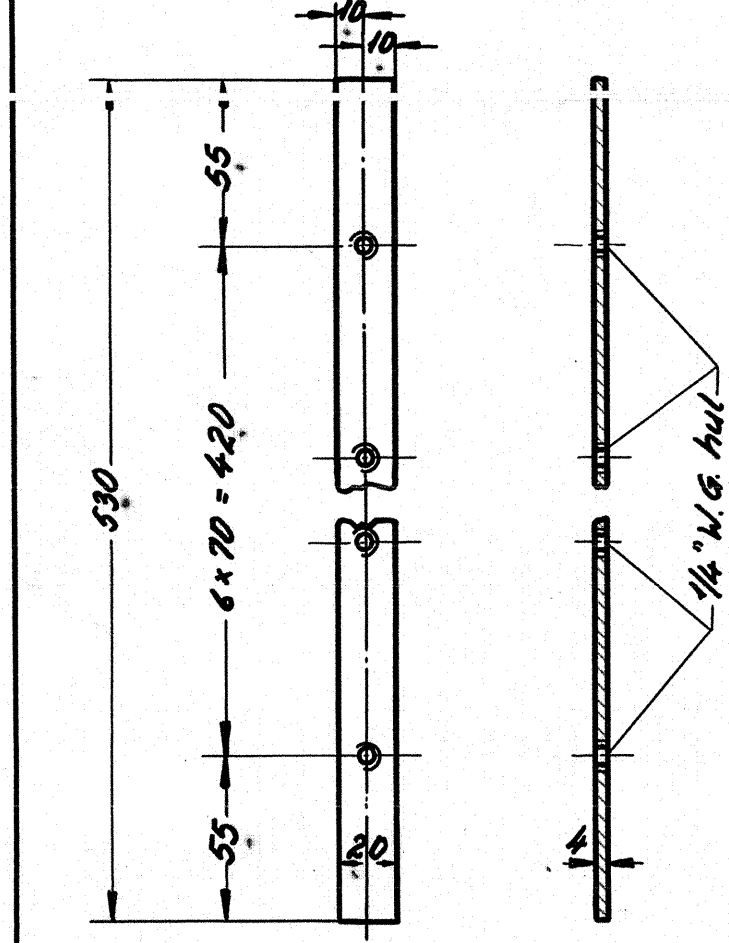
Betegnelse	rammestykke		
Ant. i alt.	Pos. 10	Mat.	st. 37
Ordn.	Sktl. 6988	Tegn.	18W-21.631 a



Betegnelse	tremme		
Ant. i alt.	Pos. 12	Mat.	aluminium
Ordn.	Sktl. 6988	Tegn.	18W-21.631 a

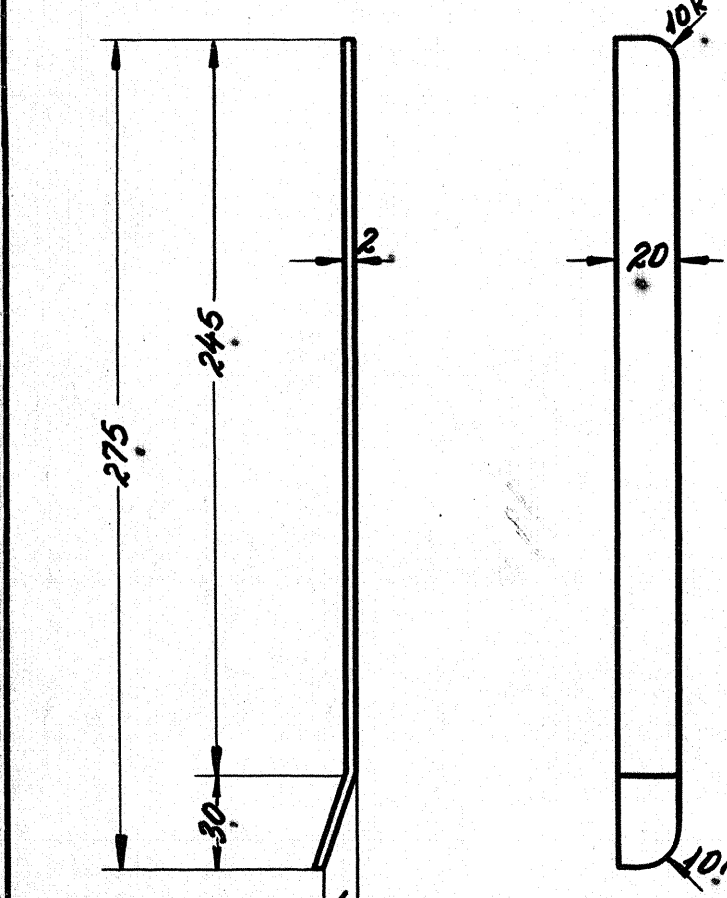
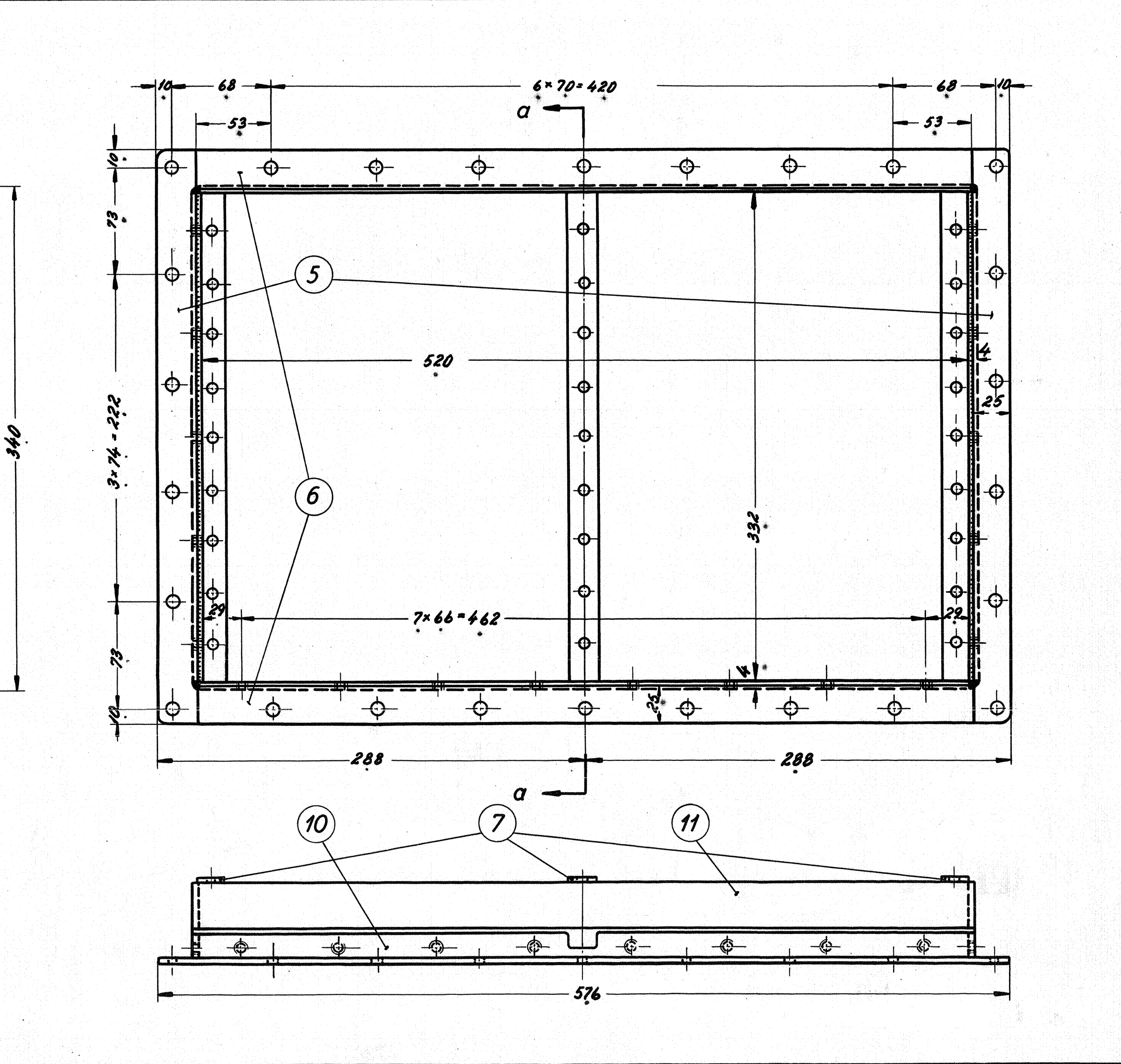
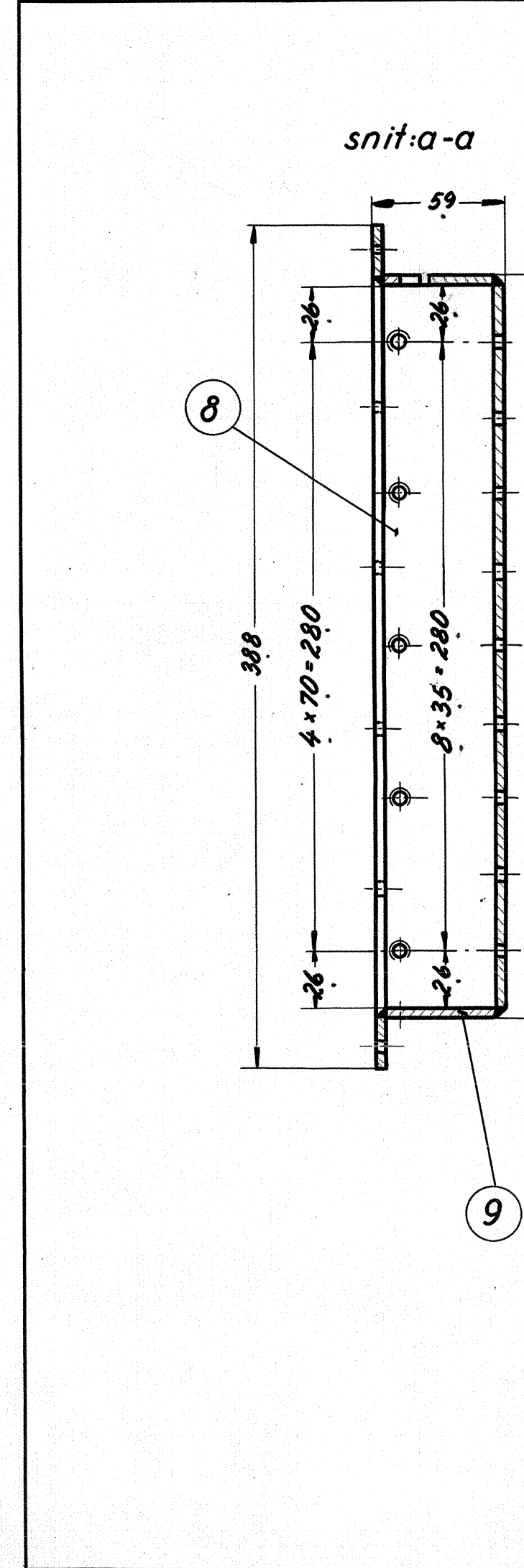


Betegnelse	tremme		
Ant. i alt.	Pos. 14	Mat.	aluminium
Ordn.	Sktl. 6988	Tegn.	18W-21.631 a

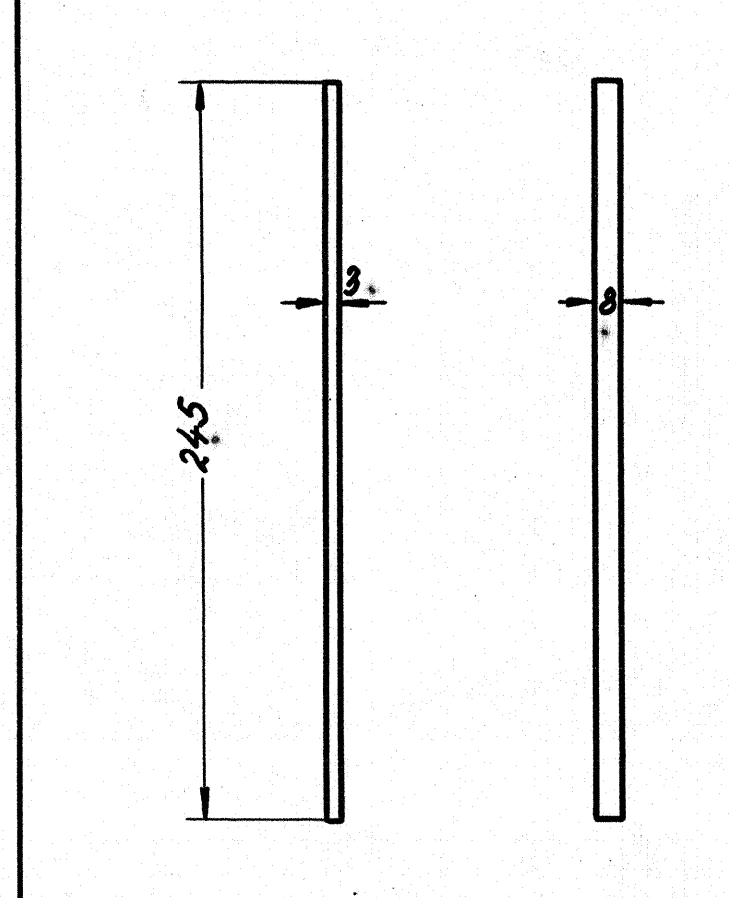


Betegnelse	befæstigelseslap		
Ant. i alt.	Pos. 16	Mat.	st. 37
Ordn.	Sktl. 6988	Tegn.	18W-21.631 a

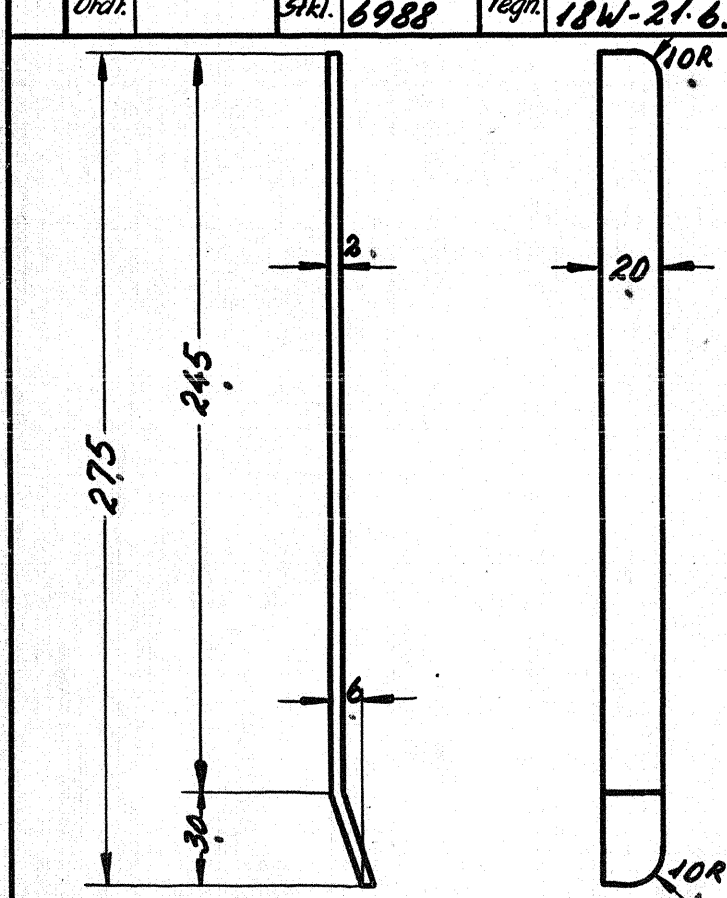
Angående anvendelse se tegn.nr. 18W-21.630
 Angående anvendelse af pos.1 til 4: 18W-3.334.
 Samlet vægt pr. vogn: 11,6 kg.



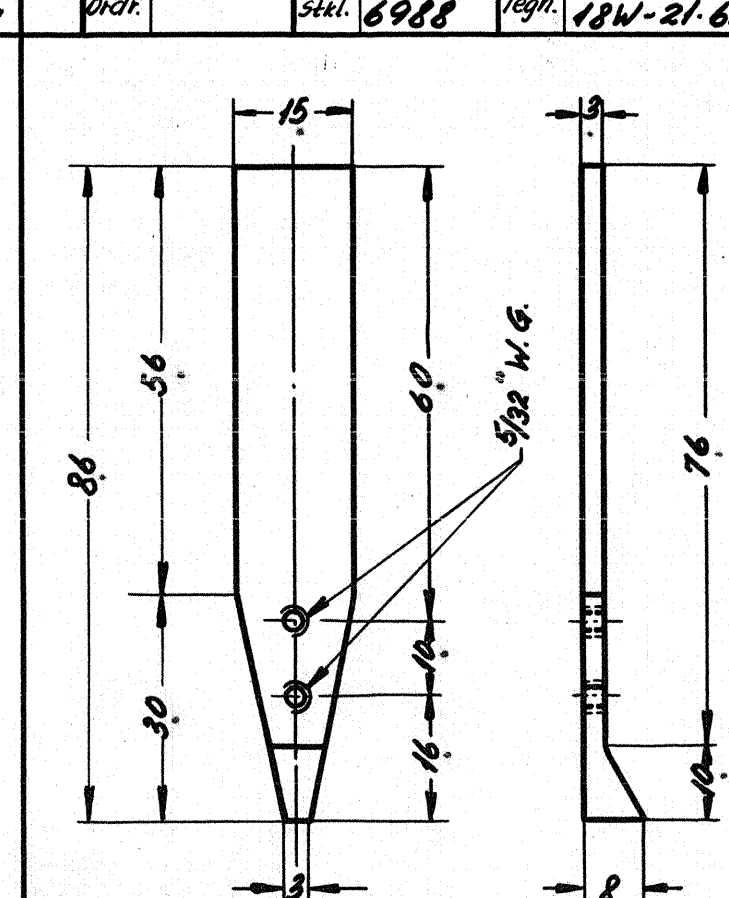
Betegnelse	kulisseystyr		
Ant. i alt.	Pos. 1	Mat.	st. 37
Ordn.	Sktl. 6988	Tegn.	18W-21.631 a



Betegnelse	kulisseeafstandsstykke		
Ant. i alt.	Pos. 3	Mat.	st. 37
Ordn.	Sktl. 6988	Tegn.	18W-21.631 a



Betegnelse	kulisseystyr		
Ant. i alt.	Pos. 2	Mat.	st. 37
Ordn.	Sktl. 6988	Tegn.	18W-21.631 a



Betegnelse	kulisseeafstandsstykke		
Ant. i alt.	Pos. 4	Mat.	st. 37
Ordn.	Sktl. 6988	Tegn.	18W-21.631 a

					21			
					20			
2	befæstigelseslap	19	st. 37	Hj. 20x6,5x1080	0,5			
68	kærskruer (halv.hoved) 1/4 N.G. x 10	18	st. 34	magasin	-			
54	nitte m. halv. hoved 5φ x 35	17	aluminium	magasin	-			
2	befæstigelseslap	16	st. 37	Hj. 20x4x1080	0,3			
54	afstandsstør 1/4 x 2,5 x 18 D.S. 541	15	st. 00.29	Hj. 1/4 x 2,5 x 1200	-			
2	tremme	14	aluminium	tegn. 18W-29.131/5	-			
16	"	13	"	tegn. 18W-29.131/3	-			
2	tremme	12	aluminium	tegn. 18W-29.131/6	-			
2	rammestykke	11	st. 37	Hj. 32x4x1070	0,5			
2	"	10	"	" 16x4x1070	0,3			
2	"	9	"	" 51x4x1070	0,8			
4	"	8	"	" 51x4x1380	0,5			
6	"	7	"	" 20x4x2070	0,2			
4	"	6	"	" 25x4x2140	0,4			
4	rammestykke	5	"	Hj. 25x4x1600	0,3			
4	kulisseejederholder	4	"	100x100x3	-			
4	kulisseeafstandsstykke	3	"	255x70x3	-			
4	kulisseystyr	2	"	Hj. 20x2x1140	0,1			
4	kulisseystyr	1	st. 37	Hj. 20x2x1140	0,1			
Stk.	Betegnelse	Pos.	Materialitet	Model nr. eller materialeoplyselse	ro	Færdig	vægt/stk	
Tegn. 45-51-FN	Rev. E.P. 14/11 51	And. III			Målestok: 1:1; 1:2,5			
Kalk. 16.N.18-11-51	Navn	Dato						
Dato	Rettesse	Indek						
1/2-st. pos. 19 tilføjet F.N.		Cl.						
Anvendelse					FRICHS			
Diesel-el. motorvogn 500/550hk.					Slykliste nr. 6988			
Tegn. nr. 18W-21.631 a					Tegn. nr. 18W-21.631 a			
Dele til jalousier til luftkanaler.					18W-21.631			
					Indeks: a			